

ADOLESCENT DEVELOPMENT SERVICES

SORTED

Substance Use and Misuses Programme



O.T.

Teaching Pack

O.T.

whats in the pack?

Page 2 Introduction

Page 3 Key Themes

Page 4 Additional Reading List

Page 5 'Street Speak' Glossary

Page 7 Where to Get Help

Page 9 References

Resources

DVD/USB, 1 set of pictures, 1 set of yes/no cards, set of 'What Happens Next' task sheets, County Lines' case studies
Flyers

E Pack/USB

<https://youtu.be/shdBTEhVqLU>

PowerPoint presentation , Additional slides, Printable resources



O.T.

Introduction

Who is it for?

The pack has been designed to be used by professionals working with young people who live, work or study in the London Borough of Hillingdon. It is offered as a creative way to engage young people in activities and discussions that explore values and attitudes, develop skills to make informed choices and give information to learn about Child Criminal Exploitation and county lines. The aim of the pack is to give information and support that enables all young people to develop the skills to help them towards making positive choices and keeping safe.

Age: 12+ the film contains scenes of a violent nature and drug resernces

Group Size

The pack has been developed to accommodate small groups of up to 12 and has options for larger groups of 12 + and can be used in a variety of settings

Workshop length

The workshop is approximately 55minutes

Film -18 minutes

Workshop presentation - 35 minutes
(additional slides extends the presentation to 1hour)

Key learning

Outcomes

By the end of the workshop young people should have:

1. An increased awareness of Child Criminal Exploitation, 'County Lines' and Grooming
2. increased knowledge of the grooming process and signs of grooming
3. An understanding of who to contact if they or someone else is involved in 'County Lines'

O.T.

Key Themes

Child Criminal Exploitation

Criminal exploitation involves exploitative situations, contexts and relationships where young people (or a third person or persons) receive something (e.g. food, accommodation, drugs, alcohol, cigarettes, affection, gifts, money) as a result of them completing a task on behalf of another individual or group of individuals; this is often of a criminal nature. Child criminal exploitation often occurs without the child's immediate recognition, with the child believing that they are in control of the situation. In all cases, those exploiting the child or young person have power over them by virtue of their age, gender, intellect, physical strength and/ or economic or other resources. Violence, coercion and intimidation are common, involvement in exploitative relationships being characterised in the main by the child or young person's limited availability of choice resulting from their social/ economic and/or emotional vulnerability (Children's Society, 2017)

County Lines

A term used when drug gangs from big cities expand their operations to smaller towns, often using violence to drive out local dealers and exploiting children and vulnerable people to sell drugs. Those dealers will use dedicated mobile phone lines, known as 'deal lines', to take orders from drug users. Heroin, cocaine and crack cocaine are the most common drugs being supplied and ordered. In most instances, the users or costumers will live in a different area to where the dealers and network is based, so drug so drug runners are needed to transport and collect payment. (NCA, 2019)

Grooming

Grooming is a process when someone builds an emotional connection with a child to gain their trust for the purposes of exploitation or trafficking. Children and young people can be groomed online or face to face, by a stranger or by someone they know (for example a family member, friend or professional). Groomers may be male or female. They could be any age. Many children and young people don't understand that they have been groomed, or that what has happened is abuse. (NSPCC, 2018)

O.T.

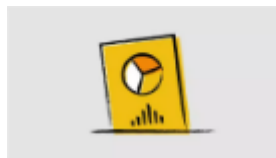
Reading List

Click on the icons below for more detail about the key themes and organisations actively working with young people involved in CCE and 'County Lines'.



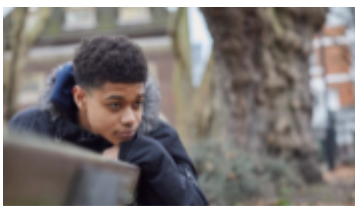
Substance misuse | The Children's Society

We support young people affected by substance misuse, whether they are drinking too much or using drugs, or their parents have an addiction.



Counting Lives | The Children's Society

Counting Lives uncovers the sad truth that professionals are struggling to keep up with criminal exploitation.



Grooming

Children and young people can be groomed online or in the real world, by a stranger or by someone they know. If you're worried about a child, we have advic...

[View more](#)



Criminal exploitation of children and vulnerable adults: county lines

Guidance for frontline professionals on dealing with county lines, part of the government's approach to ending gang violence and exploitation.



O.T.

Street Speak

Glossary

Burn Phone - Small brick phone, usually a older style Nokia, used as a way of communication to sell drugs. (Sky,2018)

Clean Skin - Young person, who is not 'a usual suspect', to be involved with drug dealing activities. The gangs target young people with no criminal record, in education etc. To minimise the risk of the young person being stopped. (Sky, 2018)

Courier - A young person who traffics drugs between locations. (Sky 2018)

Cuckooing - When drug gangs take over the house of a vulnerable person through violence and intimidation, using it as a base to for selling and manufacturing drugs. (Fearless.org, 2019)

Debt Bondage - The pledge of a person's services as repayment of a debt or other obligation, where the terms of the repayment are not clearly or reasonably stated and the person holding the debt has control over the worker. (Wikipedia, 2019)

Food - Illicit drugs (cocaine, crack cocaine and heroin) which are being trafficked and sold by drug dealers. (Sky, 2018)

Going Country or Going Cunch - This a popular term used by young people to describe county lines activity. it can also mean the act of travelling to another city/town to deliver drugs or money. (Fearless.org, 2019)

O.T., Out There or Out of Town - Often used by people involved in 'county lines' to indicate they are in another part of the country selling drugs. (Sky, 2018)

O.T.

Street Speak

Glossary

Plug - Main drug supplier whose name is not known to younger gang members. (Sky,2018)

Plugging - The term used to describe the act of carrying drugs internally to avoid being robbed by another gang or stopped by the police. (Sky,2018)

Runner - A young person who sells drugs for a dealer.

Stash House - The house/flat where drugs are kept before being moved to a trap house. (BBC, 2018)

Trapping - The act of selling drugs. Trapping can refer to the act of moving drugs from one town to another. (Fearless.org, 2019)

Trap House - A building used as a base from where drugs are sold (or sometimes manufactured). These houses are usually the home of a vulnerable adult, often a drug user. Young people are often forced to stay in trap houses for a period of time to sell drugs. (Fearless.org, 2019)

Trap Line -This refers to when someone owns a mobile phone specifically for the purpose of running and selling of drugs. (Fearless.org, 2019)

Taxing - A term which describes the infliction of violence in order to obtain control i.e. the marking or injuring a gang member who has done wrong. It is thought to be used in a similar way to the term 'debt bondage' i.e. the creation of a drug debt perhaps through fake robbery. Which the victim then has to pay off. (NCA 2017)

O.T.

Where to Get Help

Each setting will have a safeguarding policy and a duty of care to help young people who are at risk. As a professional you are the person most likely to notice when a young person is being exploited or have a young person disclose to you that they or another is being criminally exploited. Follow your settings guidelines for reporting and for additional help and support please see below.

Locally

- **Sorted** - (Substance Use and Misuse Programmes) Fountain's Mill Young Peoples Centre.
Phone 01895 250721 Email sorted@hillington.gov.uk
- **Axis** - (Early Intervention and Prevention Project)Link A ,Civic Centre
axis@hillington.gov.uk

National Helplines

- **Childline** - 0800 1111
<https://www.childline.org.uk/>
- **Crime Stoppers** - 0800 555 111
- **fearless.org**
<https://www.fearless.org/en>
- **Missing people** - 116 000
<https://www.missingpeople.org.uk/>
- **Police** -
Emergency 999 /non emergency 101

Other Organisations

- **Barnardos** - A national charity that support and protect children and young people facing a wide range of issues, from drug misuse to disability, from sexual abuse to domestic violence. <https://www.barnardos.org.uk/>
- **The Children's Society** - A national charity that works with the country's most vulnerable children and young people.
<https://www.childrenssociety.org.uk/>
- **Catch 22** - A social business with a social mission which operates in the United Kingdom . Catch22 designs and delivers services that build resilience and aspiration in people and communities.

O.T.

Where to Get Help

Other Organisations

- **London Gang Exit** - LGE is jointly commissioned by the Mayor's Office for Policing and Crime (MOPAC) and MTCNovo. LGE empowers young people to move away from gang lifestyles by providing support to exit, developing new skills, and providing the opportunity for social reintegration into the community through support, guidance and practical help.
<https://saferlondon.org.uk/services/london-gang-exit/>
- **Rescue and Response** - A three-year MOPAC funded project working with young Londoners affected by County Lines activities.
<https://www.stgilestrust.org.uk/page/rescue-and-response>
- **Safer London** - An organisation working with young people affected by exploitation and crime. <https://saferlondon.org.uk/>
- **Space** - A self-funded organisation founded in January 2018, in response to the national prevalence of Child Criminal Exploitation (CCE) and the County Lines phenomenon which has entrenched thousands of young children and people into serious violence and organised crime.
<http://www.bespaceaware.co.uk/436824474>
- **St. Giles Trust** - A charity that works with people facing disadvantages such as homelessness, long-term unemployment, an offending background, addiction, severe poverty and involvement in gangs. <https://www.stgilestrust.org.uk/>
- **Victim Support** - A charity that works with people affected by crime or traumatic events to get the support they need and respect they deserve
<https://www.victimsupport.org.uk/>

O.T.

References

1. **BBC, 2018** , 'Inside Small-town Britain's Drug Epidemic '
<https://www.bbc.co.uk/iplayer/episode/p06hj7n1/focus-inside-smalltown-britains-drug-epidemic>
2. **Fearless.Org (2019)** - 'County Lines - Recognise these terms?' <https://www.fearless.org/en/campaigns/county-lines>
3. **National Crime Agency (2017)** - 'County Lines Violence, Exploitation & Drug Supply' National Briefing Report <https://nationalcrimeagency.gov.uk/who-we-are/publications/234-county-lines-violence-exploitation-drug-supply-2017/file>
4. **Wikipedia (2019)** - 'Debt Bondage'
https://en.wikipedia.org/wiki/Debt_bondage

**Created by Targeted Programmes,
London Borough of Hillingdon
Funded by MOPAC**

All the contents of this pack are copyright of the Targeted Programmes team at London Borough of Hillingdon. None of the contents of the pack may be reproduced in any form without the consent of the Targeted Programmes team. The resource pack may be photocopied for use within education settings where a pack has been supplied © Targeted Programmes, London Borough of Hillingdon

THE PEOPLE BEHIND THE TARGETED PROGRAMMES

Contact us to see
how we can support
your young people

CENTRAL CONTACT CENTRE

Targeted Programmes
targetedprogrammes@hillingdon.gov.uk
01895 556 300

To make a referral to the Adolescent Development Services' Targeted Programme offer, follow our referral link:
bit.ly/targetedprogrammes

BOYS AND YOUNG MEN'S PROGRAMME

Sandra Rose
srose@hillingdon.gov.uk
01895 556 300 ext 4124
07809230760

GIRLS AND YOUNG WOMEN'S PROGRAMME

Monica Gaga
mgaga@hillingdon.gov.uk
01895 556 300 ext 4226
075 7214 3777

PEER LEADERSHIP PROGRAMMES

Marie Fleming
mfleming@hillingdon.gov.uk
01895 556721 ext: 6721
07908 798471

EMOTIONAL HEALTH AND WELLBEING PROGRAMMES

Aurora Da Silva
adasilva@hillingdon.gov.uk
01895 277222
07947625106

SEXUAL HEALTH AND WELLBEING PROGRAMMES

Vicky Cooke
vcooke@hillingdon.gov.uk
01895 556 300 ext: 4235
07951 884349

SUBSTANCE USE AND MISUSE PROGRAMME

Ania Frejlich-Botha
afrejlich-botha@hillingdon.gov.uk
01895 250721 ext: 4134
07957789589

TRANSITION SUPPORT PROGRAMME

Chamila Somaskandan
csomaskandan@hillingdon.gov.uk
01895 556300 ext: 4173
07958 121123

OPERATIONS MANAGER ADOLESCENT DEVELOPMENT SERVICES

Lucy Wylde
lwylde2@hillingdon.gov.uk
01895 556300 ext 4261
07710 854663